



READY. SET. GO.

V-PORTAL™ QUICK START GUIDE
VONAGE® V-PORTAL PHONE ADAPTER



Start Here.

Get ready to start saving money on your phone bill today! The Vonage V-Portal Phone Adapter is your gateway to Vonage digital phone service. Just follow these easy step-by-step instructions to set up your new V-Portal Phone Adapter.

In as little as five minutes, you'll be making calls with high-quality, low-cost Vonage digital phone service!

TO GET STARTED, LOCATE YOUR:

- High-speed/broadband modem
- Telephone
- Ethernet cable that goes from your modem to your computer or router

Ready.

ACTIVATE AND UNPACK

If you received your V-Portal Phone Adapter **in the mail**, your Vonage phone service is already activated.

If you purchased your V-Portal Phone Adapter from **a retail store**, you need to activate your Vonage phone service if you didn't do so at the store.

Go to www.vonage.ca/activate and follow the easy steps.

Next, unpack the V-Portal Phone Adapter box.

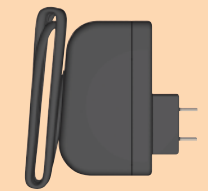
Here's what's inside:



V-Portal Phone Adapter



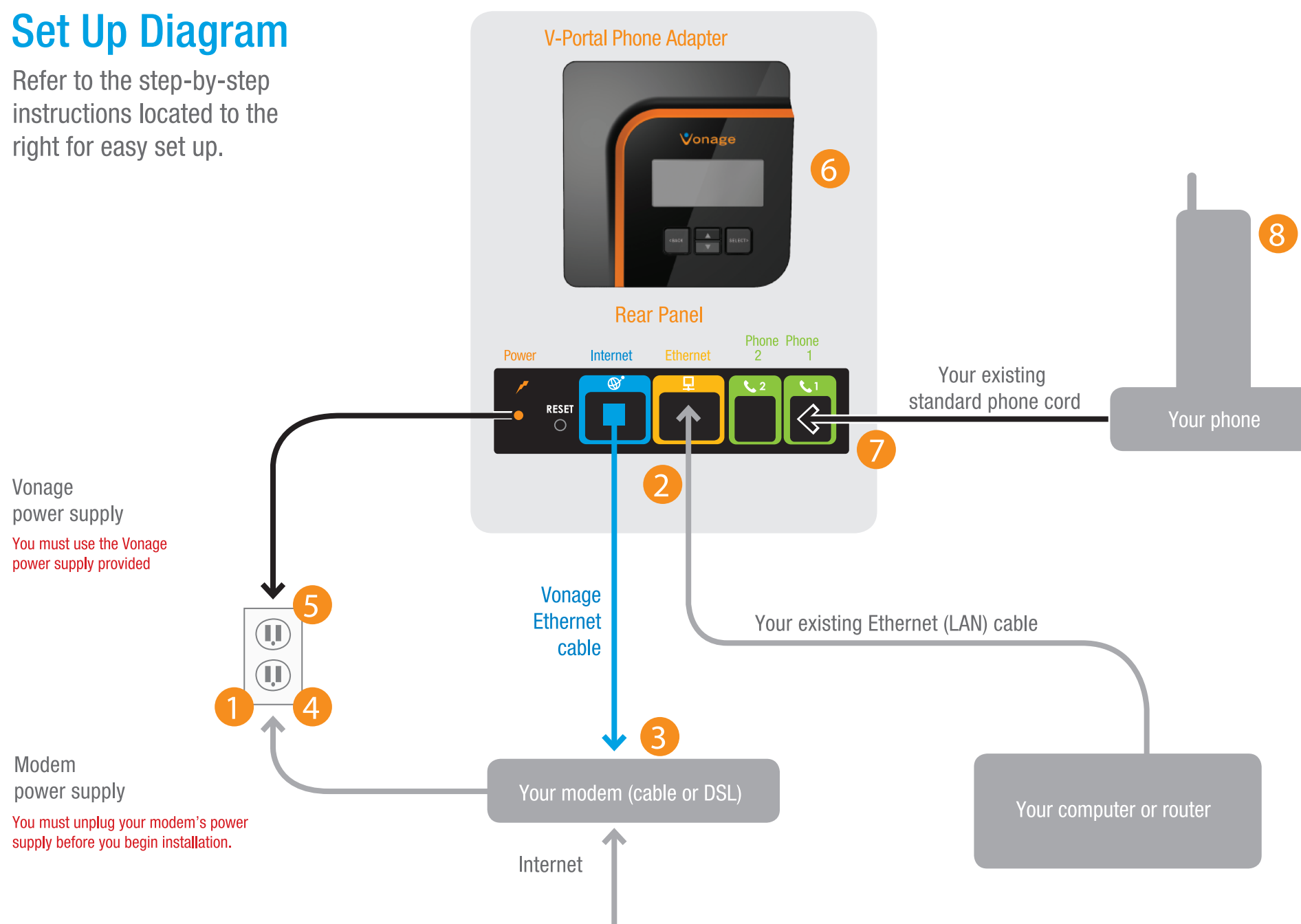
Vonage Ethernet Cable



Vonage Power Supply

Set Up Diagram

Refer to the step-by-step instructions located to the right for easy set up.



Set.

PREPARE

- 1 • **Unplug your modem's existing power cord.**
- **Leave your modem connected** to your cable or DSL phone line that supplies your Internet connection.

CONNECT

- 2 • **From the back of your modem, unplug the existing Ethernet cable** that connects your modem to your computer or router and move this cable to the yellow Ethernet port on the V-Portal Phone Adapter.
- 3 • **Take the blue Ethernet cable provided by Vonage and connect** one end to the blue port on the V-Portal Phone Adapter and the other end to your modem's Ethernet (LAN) port.

POWER UP

- 4 • **Plug your modem's power cord into your power outlet.**
- 5 • **Wait 30 seconds. Plug in your V-Portal Phone Adapter power supply.**

FOLLOW THE LCD SCREEN

- 6 • **When the V-Portal Phone Adapter is plugged in, the LCD screen will light up and display messages** that help you walk through the start-up process from "Powering Up" to "Ready to Make Calls."
 - Wait until you see (Phone Line 1) on the V-Portal Phone Adapter screen.

Have DSL?
See other side for additional set up instructions.

Go.

CONNECT YOUR PHONE

- 7 • **Unplug your telephone from the wall jack and connect it to the green Phone 1 port on the Vonage V-Portal Phone Adapter.**
 - Check for a dial tone.
- 8 • **Make a call! You're now saving money on your phone bill!**

USEFUL TERMS

ISP (Internet Service Provider)
The company that supplies your high-speed broadband Internet connection.

Modem
A piece of network equipment that you use to gain access to the Internet—typically either DSL through your phone line or cable service.

Router
A network device that lets you connect more than one piece of equipment (like computers) to your DSL or cable modem to share one Internet connection. Some ISPs supply combination modem/routers.

Port
This is an opening on a device where you connect a cable. An Ethernet port looks like a wide phone jack.